



Pocket plantings

are an easy, manageable way to boost biodiversity by adding or preserving native vegetation, with even a small 10'x10' area providing valuable pollinator habitat that can be expanded over time.

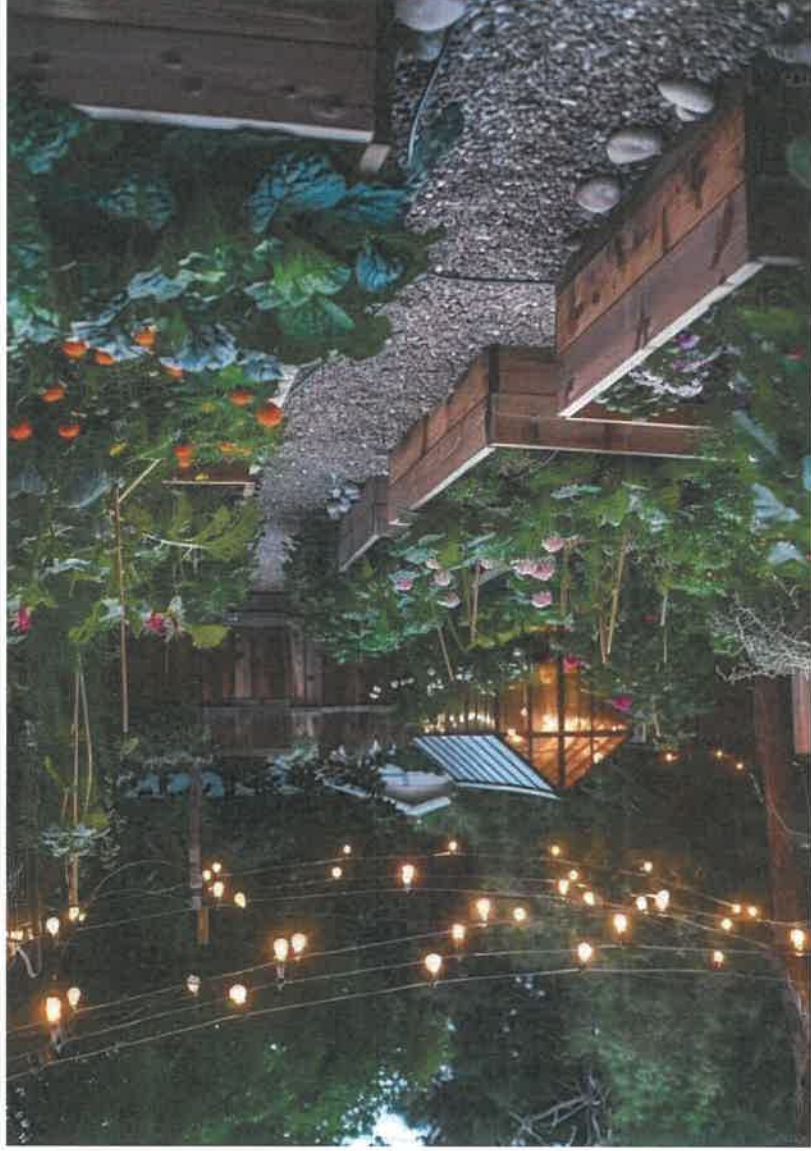
Native and Pollinator-Friendly Planting

More homeowners are shifting toward native plants that support local pollinators.



Increasing Functionality

- Front Yard Patios – Create inviting outdoor living spaces with seating, fire pits, and decorative plantings for enhanced curb appeal.
- Edible Gardens – Incorporate raised beds, vertical planters, and fruit trees to provide fresh produce while enhancing biodiversity.
- Outdoor Kitchens – Equip with grills, countertops, and storage to create a functional cooking and dining area for outdoor gatherings.
- Water Features (Fish Ponds & Aquatic Plantings) – Enhance tranquility and biodiversity with ponds, waterfalls, and aquatic vegetation.



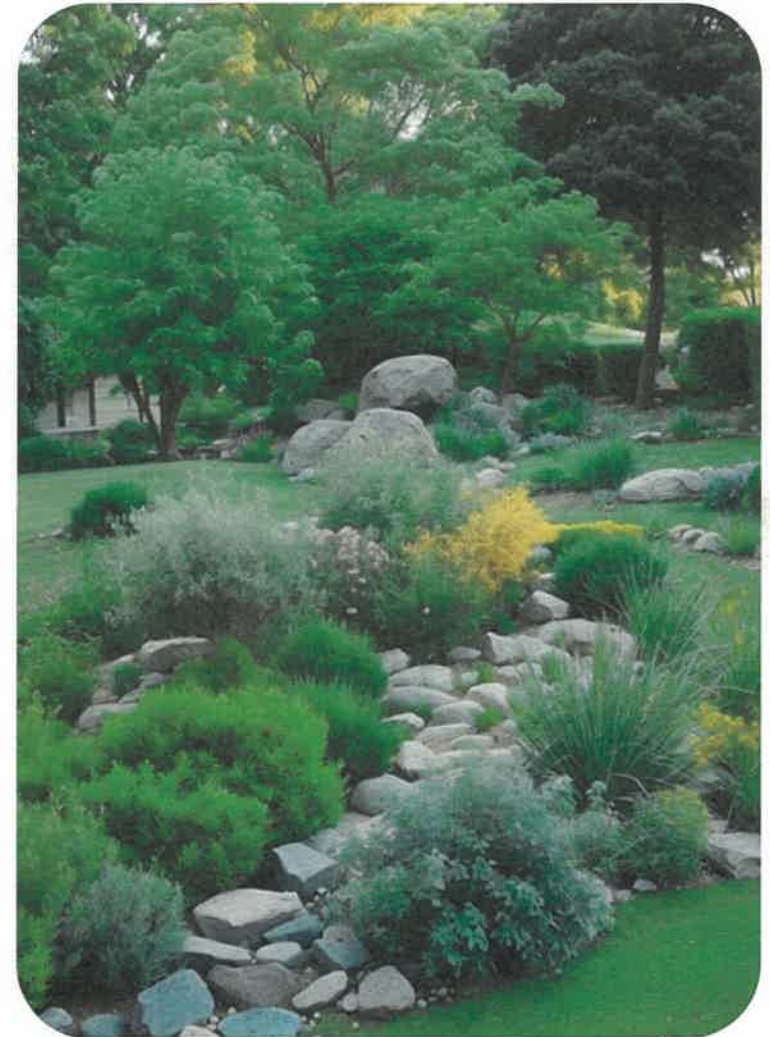
Managing your Stormwater

Features that promote water conservation, support local wildlife, and create a functional, low-maintenance landscape solution



Dry Creek Beds

A shallow, rocky channel that directs water flow, preventing erosion and managing runoff. It mimics a natural stream but typically remains dry between rainfalls. Ideal for sloped areas or places with heavy runoff.





Rain Gardens

A planted depression that captures and absorbs rainwater, filtering pollutants and reducing runoff. Filled with deep-rooted native plants, it helps recharge groundwater and supports pollinators. Best for low-lying areas where water naturally collects.



**2025
WATER GARDEN
TRENDS**

Natural swimming pools provide a chemical-free option, using plants, gravel, and natural filtration to maintain clean water. They integrate into the landscape promoting an eco-friendly swimming environment.



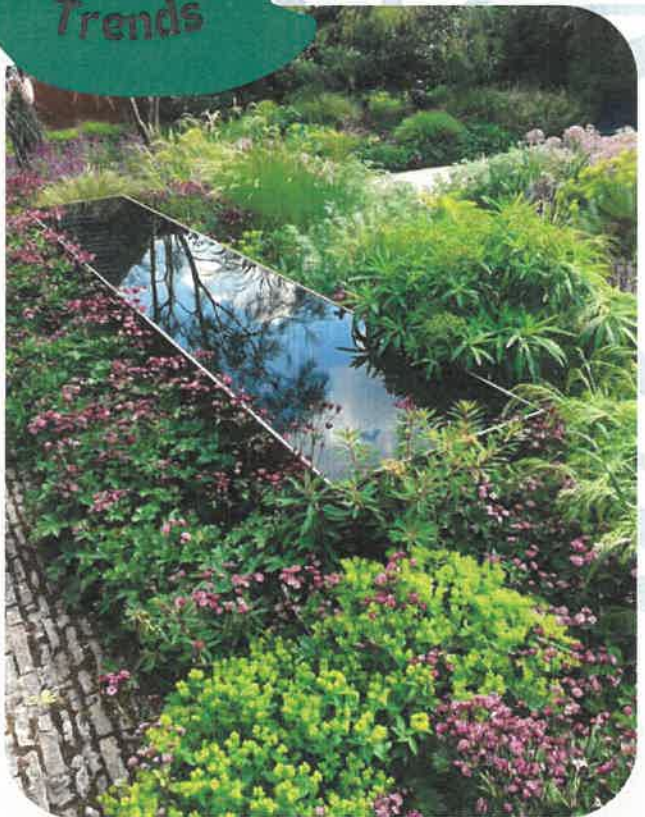
Water Garden Trends

Playing with Scale

Small container ponds ideal for patios and small-space living, bring the beauty of aquatic plants like miniature water lilies and floating hyacinths to balconies and courtyards.



Water Garden Trends



Reflecting water gardens provide a serene focal point that enhances aesthetics and sustainability. Their mirror-like surface reflects plants, architecture, and sky, adding depth and tranquility to outdoor spaces. Suitable for modern and naturalistic spaces, they support biodiversity and water conservation, making them ideal for courtyards, patios, and urban gardens.





NEW PLANTS
FOR
2025



Rose
'Flavorette Honey Apricot'

Full Sun
Height: 5-8ft
Spread: 3-4ft
Edible & Disease resistant
Blooms: Summer



Physocarpus opulifolius
'Ginger Wine' Ninebark

Full Sun
Height: 5-6ft
Spread: 5-6ft
Mildew resistant
Blooms: Spring



Ribes alpinum
'Skyward Blue' Alpine Currant

Sun/Part Sun/Shade
Height: 4ft
Spread: 3ft
Great hedge plant
Great fall color



Hydrangea arborescens
'FlowerFull'

Sun to Part Shade
Height: 3-4 ft
Spread: 4-5ft
Blooms: Summer
Non-flopping/sturdy stems

SHRUBS

PERENNIALS



Astilbe chinensis
'Mighty Chocolate Cherry'

Sun to Part Shade
Height: 4 ft
Spread: 4ft
Blooms: Spring to Summer
Deer & Rabbit Resistant!



Veronica longifolia
'Skyward Blue'

Sun to Part Shade
Height: 18"
Spread: 16"
Fine texture-mass plantings
Deer resistant!



Hosta
'Royal Wedding'

Part Shade to Full Shade
Height: 12"
Spread: 20"
Fragrant white flowers
Blooms: Mid to Late Summer



Coreopsis grandiflora
'Solar Fancy'

Full Sun
Height: 20"
Spread: 18"
Upright/Mounded
Blooms: Late spring to fall



Carpinus caroliniana
'Fire King' Beech

Full Sun
Height: 30ft
Spread: 15ft
Columnar native with
lively mix of red & orange
fall color



Malus s 'Durlawrence'
'Courageous Crabapple'

Full Sun
Height: 20-25ft
Spread: 15-20ft
Fragrant pollinator
Blooms: Spring



Magnolia x loebneri 'Ruth'
'Spring Welcome' Magnolia

Sun to Part Shade
Height: 20ft
Spread: 20ft
Pink buds unfurl to large,
white blooms
Pest free!



Acer rubrum 'Karpick'
'Karpick' Red Maple

Full Sun
Height: 40ft
Spread: 20ft
Choice shade tree
for smaller yards

TREES

WATER PLANTS

Sun
Quiet waters, lakes, ponds,
show streams
Blooms: June-August

Nuphar X rubrodiscal
'Intermediate Pond Lily'



Sun to Part Shade
Bogs, Swamps, Lakes,
Streams, Ditches,
3ft standing water
Fruit: late spring, summer

Equisetum fluviatile
'Water Horsetail'



Part Sun to Part Shade
Mucky soil, ponds, slow
moving water
Blooms: June-August

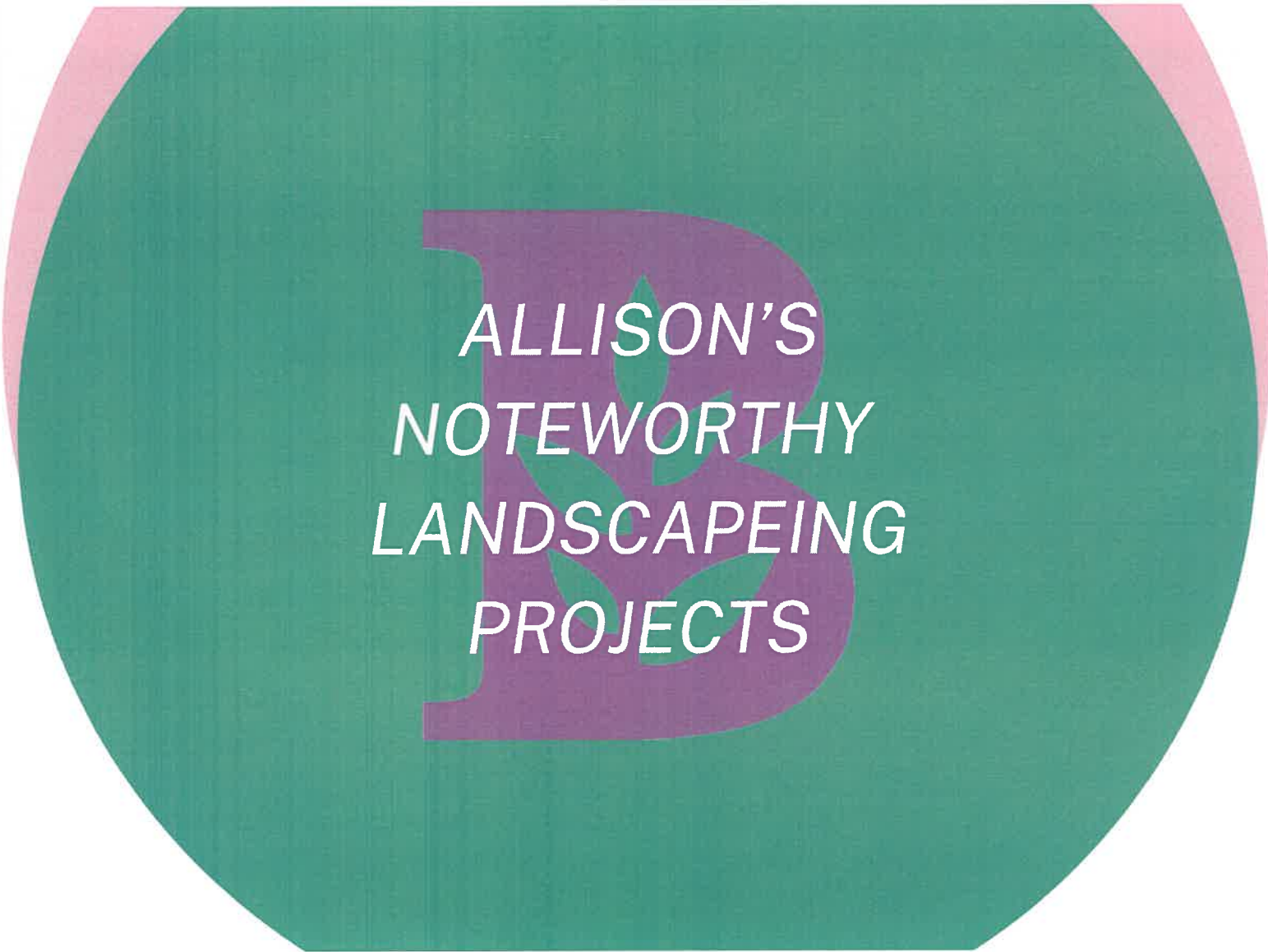
Brasenia schreberi
'Water Shield Plant'



Full Sun to Part Shade
Swamps, Bogs, Shallow Water
Blooms: May-June

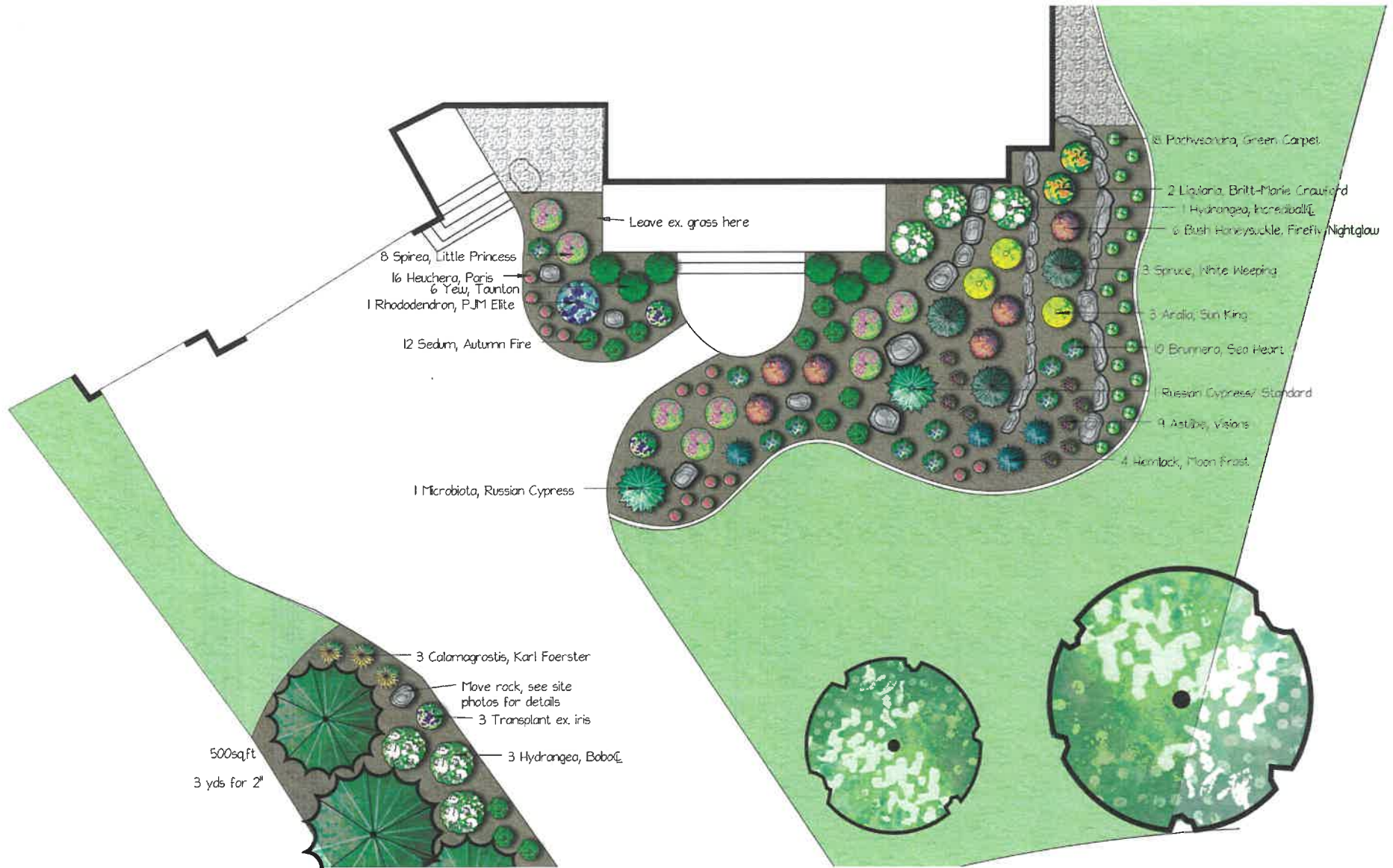
Calla palustris
'Wild Calla'





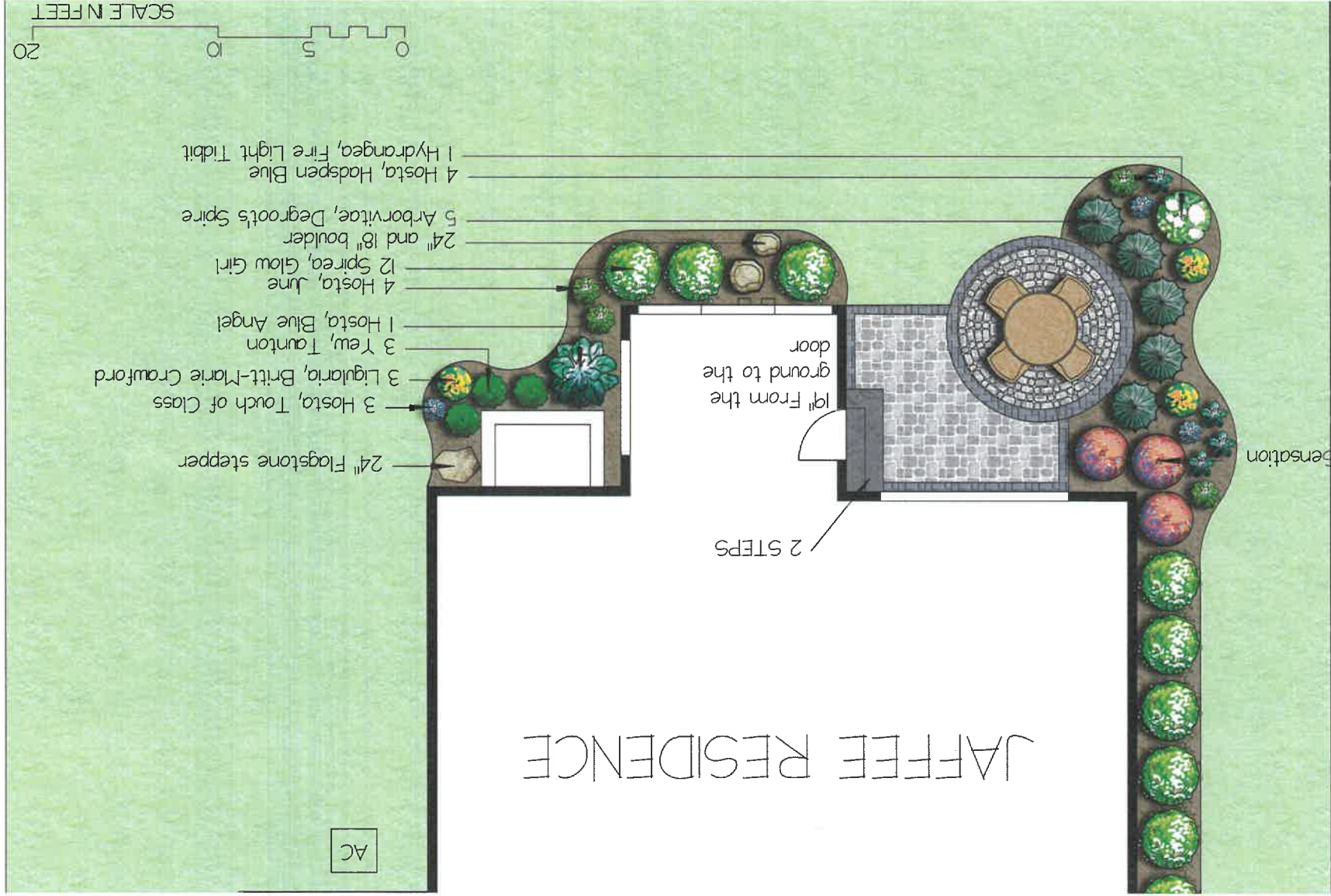
*ALLISON'S
NOTEWORTHY
LANDSCAPEING
PROJECTS*







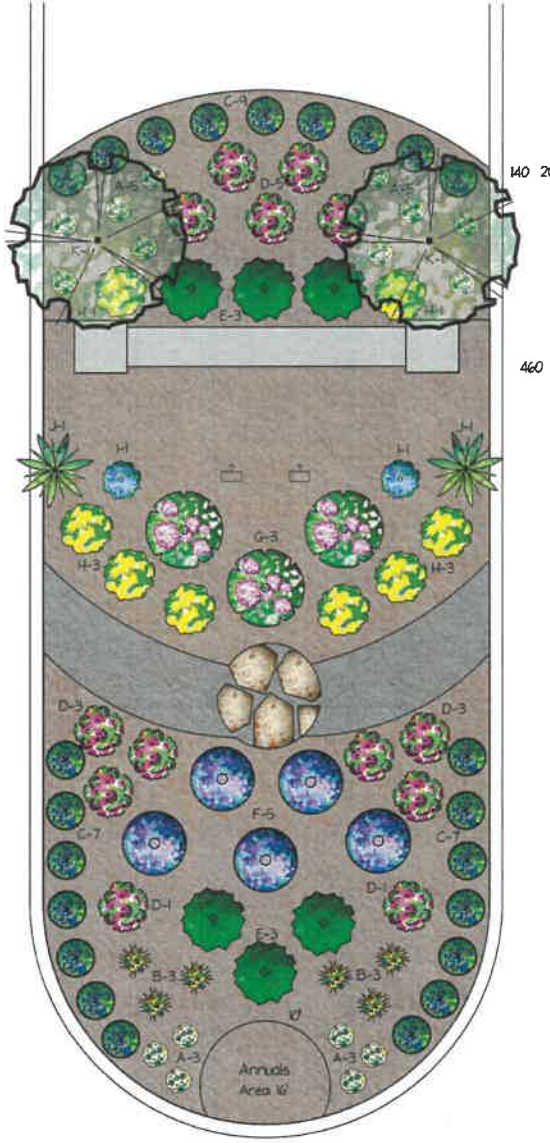




3 Weigela, Shining Sensation

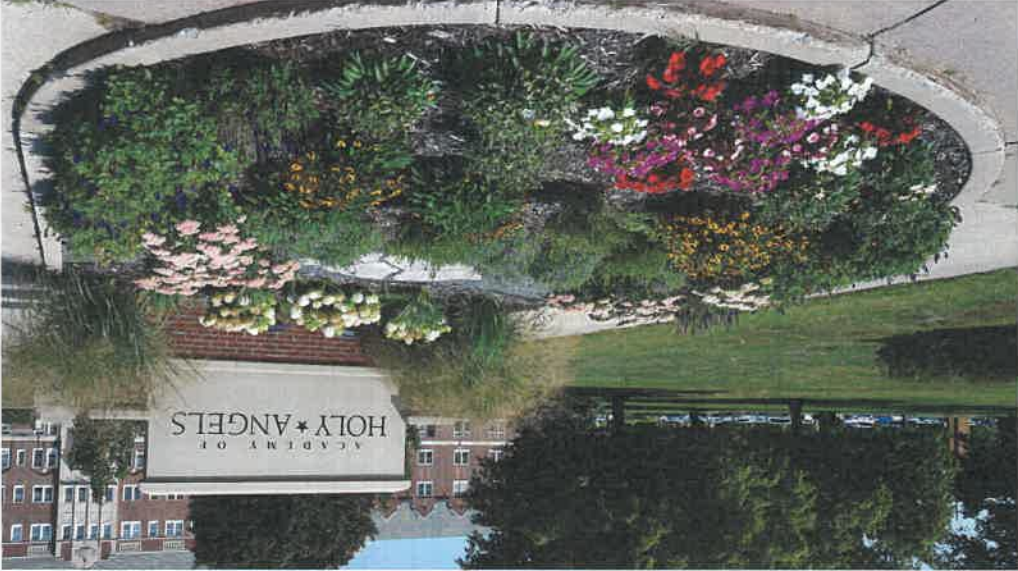


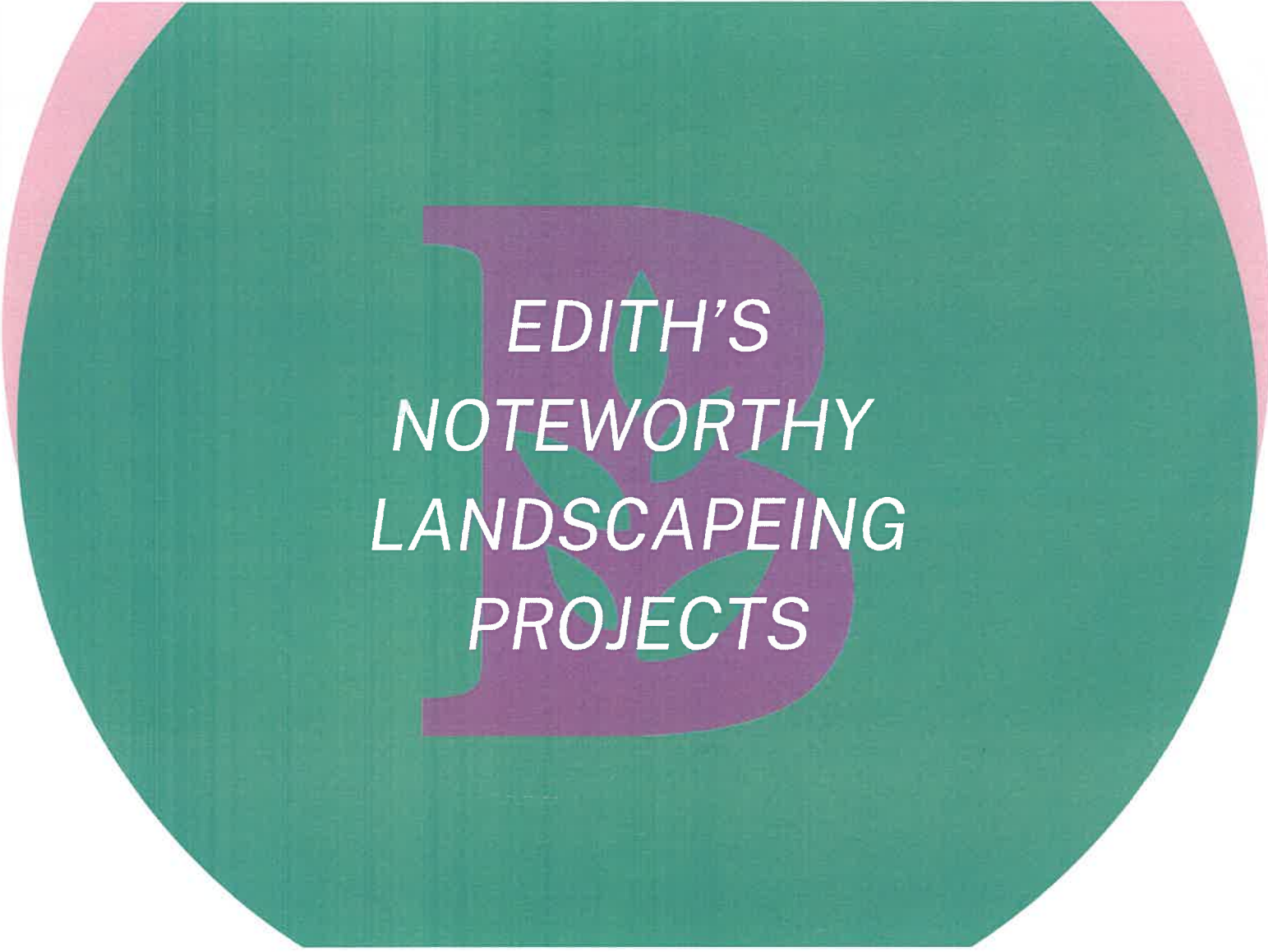




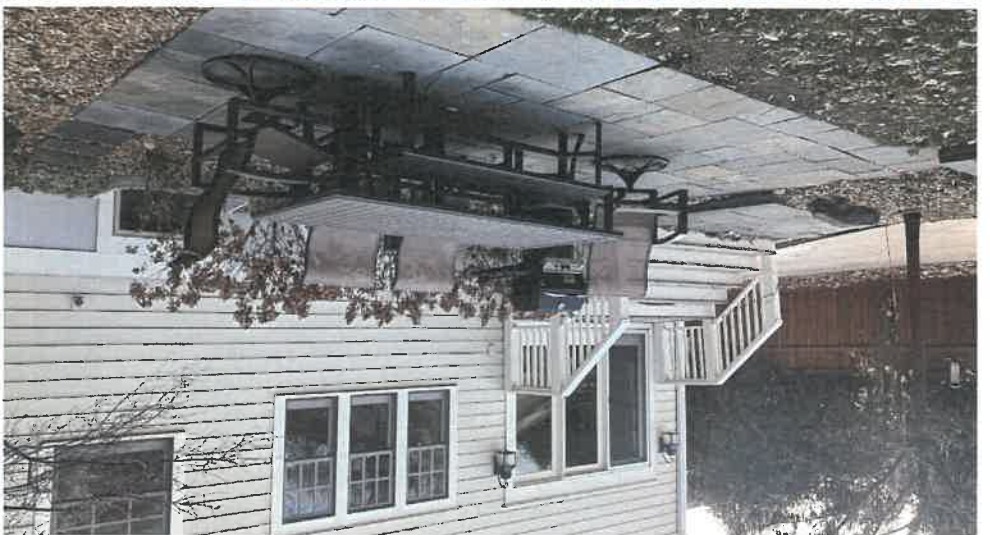
- F - PURRSIAN BLUE NEPETA
- G - FIRE LIGHT TIDBIT HYDRANGEA
- H - BUTTER AND SUGAR IRIS
- I - BREAKERS IRIS
- J - PANUM NORTH WIND GRASS
- K - IVORY SPEAR CRABAPPLE







*EDITH'S
NOTEWORTHY
LANDSCAPEING
PROJECTS*















THANK YOU



